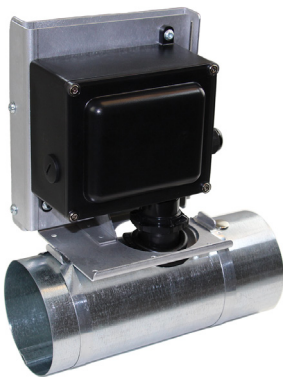


# MGS-550 Gas Detector

For Industrial Applications



## DESCRIPTION

MSA Bacharach's MGS-550 leak detector combines electrochemical, semiconductor, catalytic bead and infrared sensors into one platform to support leak detection for the new low GWP (*Global Warming Potential*) refrigerant blends as well as natural refrigerants to enable gas leak detection in the often harsh environments of industrial refrigeration.

The MGS-550 can easily be integrated into any building management system (*BMS*). The Modbus RTU interface allows the user to program and configure the unit remotely through the BMS. Remote access gives complete control to the user when using Modbus. Alternatively, electrical current or volt analog output provides an industry standard reading using 4-20mA.

Having three integrated relays within each instrument reduces the need for having to wire alarm devices back to a central control system. Because of the integrated relays, the Bacharach MGS-550 can be operated as a stand-alone system. Each relay can be individually programmed to trigger alarm devices and actions separately or as a redundant system.

The straightforward menu structure is identical regardless of the type of sensors used, reducing the costs and amount of time for training required upon installation or during maintenance.

MSA Bacharach's MGS-550 offers the flexibility of adding a second sensor at any point in time without the need for any additional controllers. Any sensor can be remotely mounted from the main instrument to a distance of 5 meters or 15 feet. It meets the requirements of EN 378 and ASHRAE 15.

## Features

One or two sensor capability

Remote sensor capabilities

Analog and digital interface

On-board relays

Magnetic wand

Status indicator and LED display

Optional MGS-408 Controller

## Benefits

Detects two gases and/or in two locations with one instrument

Flexible placement in hard to reach areas

Ease of integration with multiple control devices

Connects to local alarm devices for saving costs on installation

Non-intrusive configuration and calibration

Provides at-a-glance status overview and comprehensive direct user interface

Create an independent, centralised alarm system with up to 6 gas detectors

# MGS-550 Gas Detector



Specifications	Description		
<b>GASES AND RANGE</b>	Refrigerants	1,000 / 10,000 ppm	
	CO <sub>2</sub>	5,000 / 10,000 / 20,000 / 30,000 / 40,000 / 50,000 ppm	
	NH <sub>3</sub> *	100** / 1,000** / 5,000** / 10,000 ppm / 100% LEL	
	O <sub>2</sub>	30Vol%	
	CO**	500 / 1,000 ppm	
	Combustible Gases	5,000 ppm / 100% LEL	
	C <sub>2</sub> H <sub>4</sub>	2,000 ppm	
	NO <sub>2</sub> ***	20 ppm	
<b>REPEATABILITY</b>	±5% of applied gas concentration		
<b>DISPLAY</b>	Red 5-digit, 7-segmented LED and green status LEDs		
<b>OUTPUT</b>	Analog	4 to 20 mA, 0 to 5 V, 0 to 10 V, 1 to 5 V, 2 to 10 V	
	Digital	Modbus RTU via RS 485	
<b>POWER SUPPLY</b>	19.5 to 28.5 VDC or 24 VAC ±20%; 3- or 4-wire		
<b>RELAY</b>	Three relays, SPDT, user assignable		
	Rating 2 A @ 30 VDC NO, 0.5 A @ 125 VDC, 0.25 A @ 250 VAC, 30 W, resistive load		
<b>ENCLOSURE</b>	General Purpose	ABS IP66 with four M20 × 1.5 cable glands	
<b>SIZE (W × H × D)</b>	General Purpose	8.3" × 8.9" × 3.4" / 210 × 225 × 85 mm	
<b>WEIGHT APPROX</b>	GP: 2 lbs / 1 kg; XP: 3.5 lbs / 1.6 kg		
<b>APPROVALS</b>	CE, UL / CSA / IEC EN 61010-1		
<b>AMBIENT CONDITIONS</b>	Temperature	Semiconductor	-40 to 122°F / -40 to +50°C
		Electrochemical	-5 to 122°F / -20 to + 50°C*
		Infrared	-40 to 122°F / -40 to +50°C
		Catalytic Bead	-40 to 122°F / -40 to +50°C
	Humidity	5 to 90 % RH, non condensing	
	Pressure	23.6 to 32.5 inch Hg / 800 to 1,100 mbar	

\* NH<sub>3</sub> available as low temperature version -40°F / 40°C (not for 5,000 ppm Electrochemical sensor)

\*\* IP66 rated; not available in XP enclosure

\*\*\* Not IP66 rated; not available in XP enclosure

For ordering information, visit us at [www.mybacharach.com](http://www.mybacharach.com) or contact your Bacharach regional sales manager.

Note: This Bulletin contains only a general description of the products shown. While product uses and performance capabilities are generally described, the products shall not, under any circumstances, be used by untrained or unqualified individuals. The products shall not be used until the product instructions/user manual, which contains detailed information concerning the proper use and care of the products, including any warnings or cautions, have been thoroughly read and understood. Specifications are subject to change without prior notice. MSA is a registered trademark of MSA Technology, LLC in the US, Europe, and other Countries. For all other trademarks visit <https://us.msasafety.com/Trademarks>.

MSA operates in over 40 countries worldwide. To find an MSA office near you, please visit [MSAsafety.com/offices](http://MSAsafety.com/offices).